

VanDutch[®] 

VANDUTCH 80

THE AGILE

**SPORT
SUPERYACHT**





THE RISING STAR

VanDutch presents the VD80, an embodiment of their commitment to pushing the boundaries of yachting excellence. This is not merely a vessel; it is a testament to the harmonious blend of modern design, advanced technology, and a relentless pursuit of perfection. Welcome to the future of leisure yachting – welcome to VanDutch.

This brand-new design will conquer the market of luxury leisure yachts within an eyewink after its official presentation. The fans of design, luxury, comfort and speed on the water will be astonished of this star by the use of highest quality materials, fabrics, appliances and created living space.

STAR YACHT

‘Star yacht’ means it has everything to offer to a demanding owner: the aluminum construction guarantees a strong but also low in weight. Double MAN V12X engines each deliver a power of 2200 bHp. Which are able to bring the yacht easily to its cruising speed of 34 knots and or its high speed of 46 knots which equals 80 km/hour.

24 meter or 80 foot of living space, full beam owner area with luxury double bathroom, VIP cabin and two berth guest room, both with their own bathroom. A day-head and luxury Galley equipped with the most popular appliance brands Gaggenau or Miele Marine. A ‘shutter’ system carbon framed rooftop and tempered windows around, with a highest effective airco (AC) system below deck area’s and in the outside lounge area. And including a crew cabin with separated entrance optional, tender and ‘toys’ garage.

DESIGN

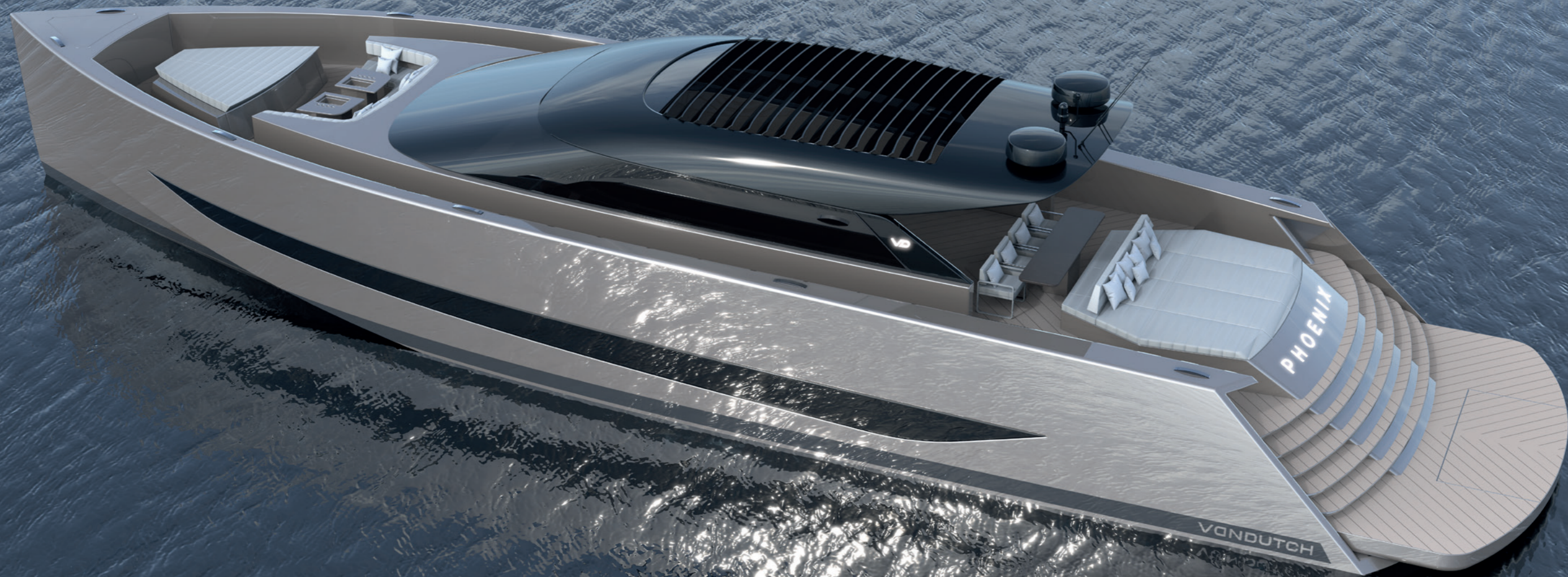
VanDutch leisure yachts stand apart with their ingenious design, offering an unparalleled aquatic haven. With a spacious outdoor lounge area beneath the exquisitely crafted rooftop on the upper deck and three cabins featuring private bathrooms, a lavishly equipped galley, and a lounge area below deck, these yachts redefine luxury on the water. Advanced air conditioning systems create a climate of comfort throughout the vessel, ensuring that you can relish exceptional sailing performance without compromise.

INNOVATION IN MATERIAL

The challenge was to create a yacht that is not only lightweight and sturdy but also fast and efficient, all while captivating design enthusiasts. To achieve this, VanDutch harnessed the latest technologies. The yacht’s hull and deck are meticulously crafted from aluminium, employing the most robust Alu plates, resulting in a rigid yet lightweight vessel. The engine drive arrangement incorporates the most modern, efficient, and quiet engines available, enhancing speed while reducing fuel consumption.

ARCHITECTURE

The entire realm of naval architecture falls under the expertise of renowned Dutch naval architects, while the illustrious Italian top designer takes charge of general arrangements and interior design, both inside and outside the lounge areas. The collaboration between Dutch and Italian design expertise produces an unrivalled synergy in crafting the perfect yachting experience.



VANGUARD DUTCH

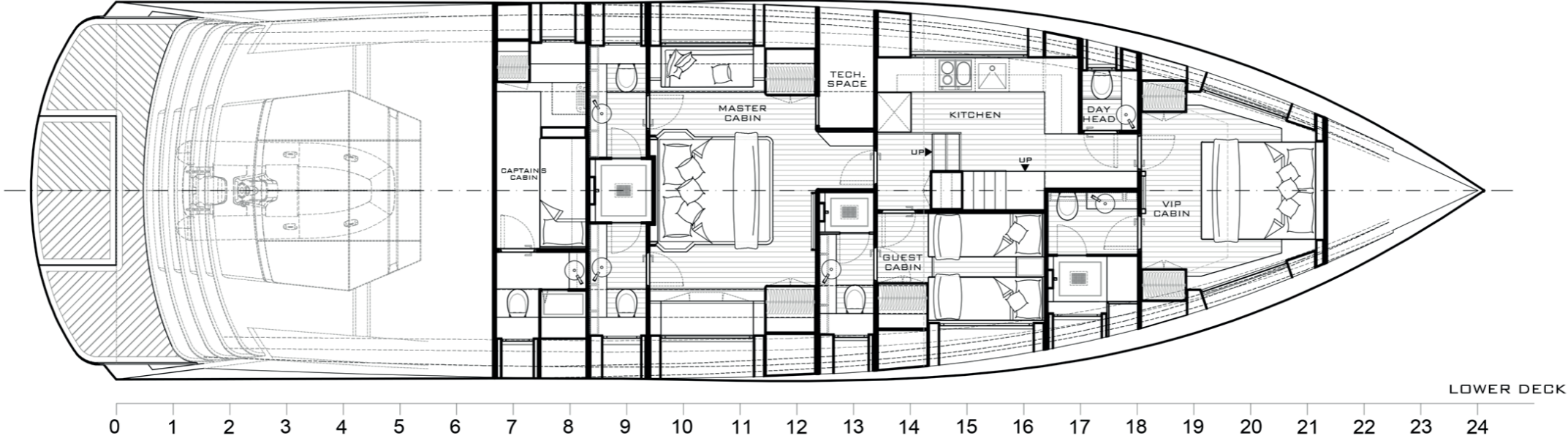
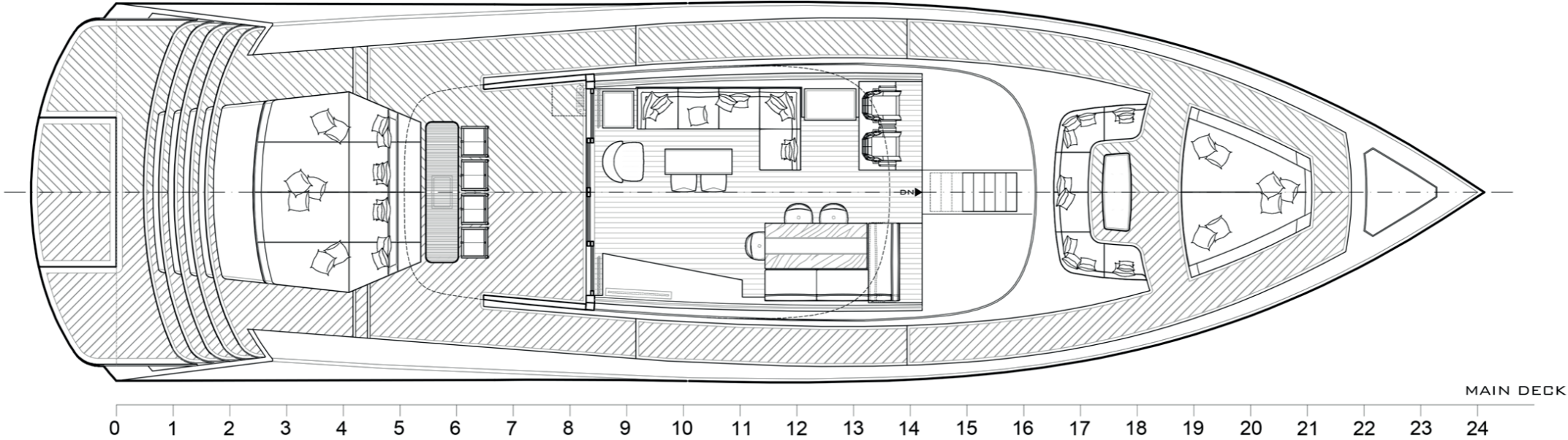
PHOENIX



VANGUARD

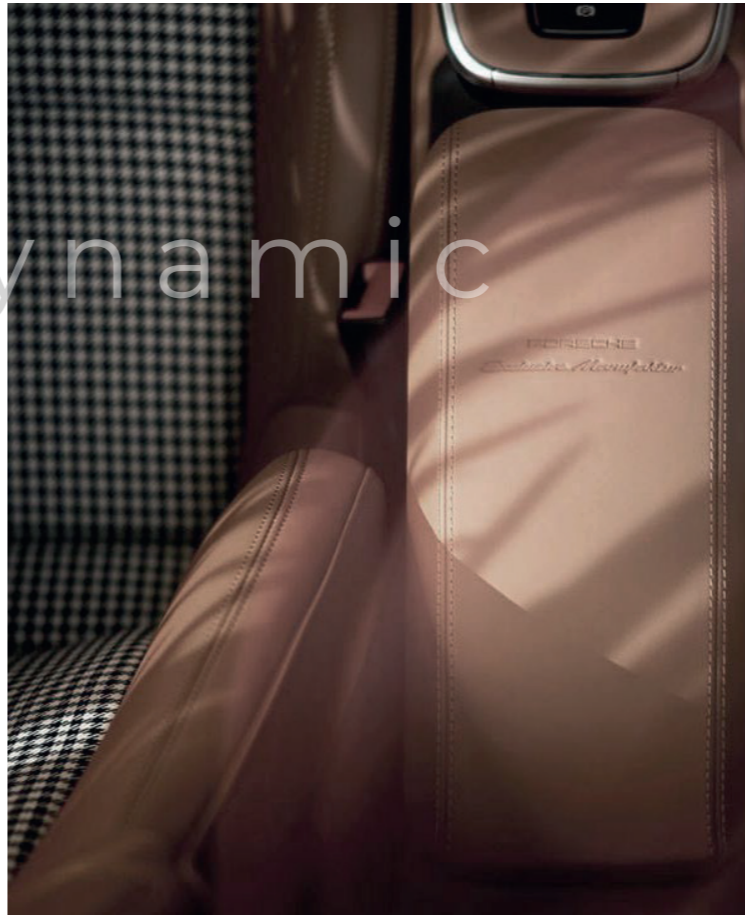
VANGUARD

GENERAL ARRANGEMENT

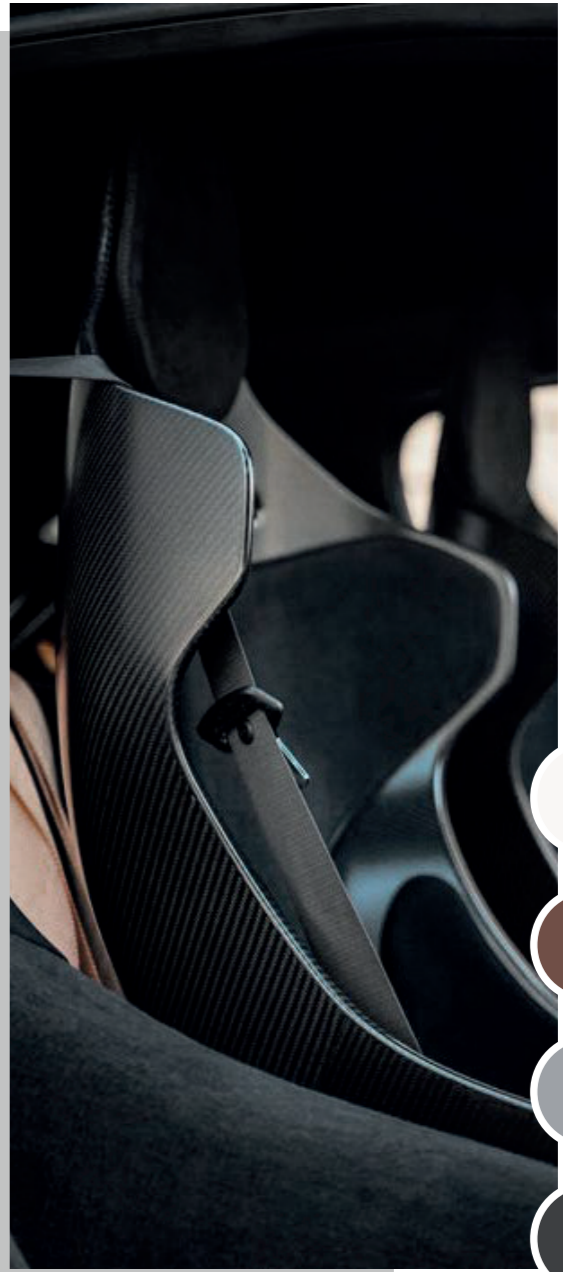


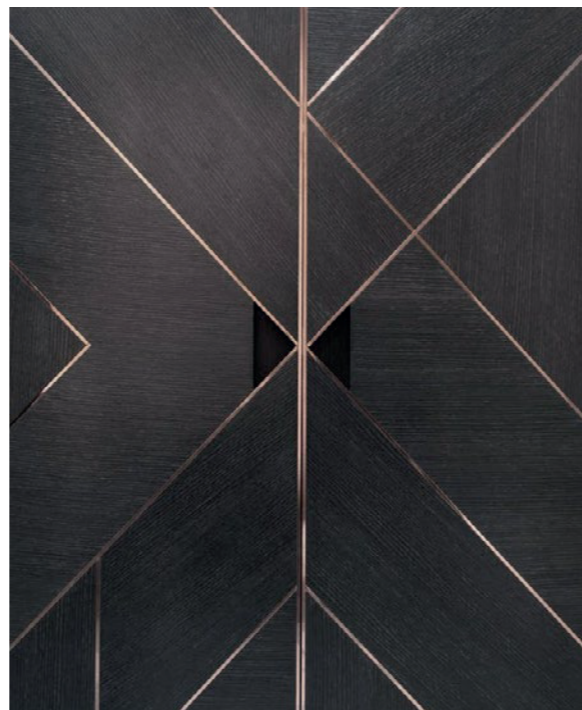


organic



dynamic



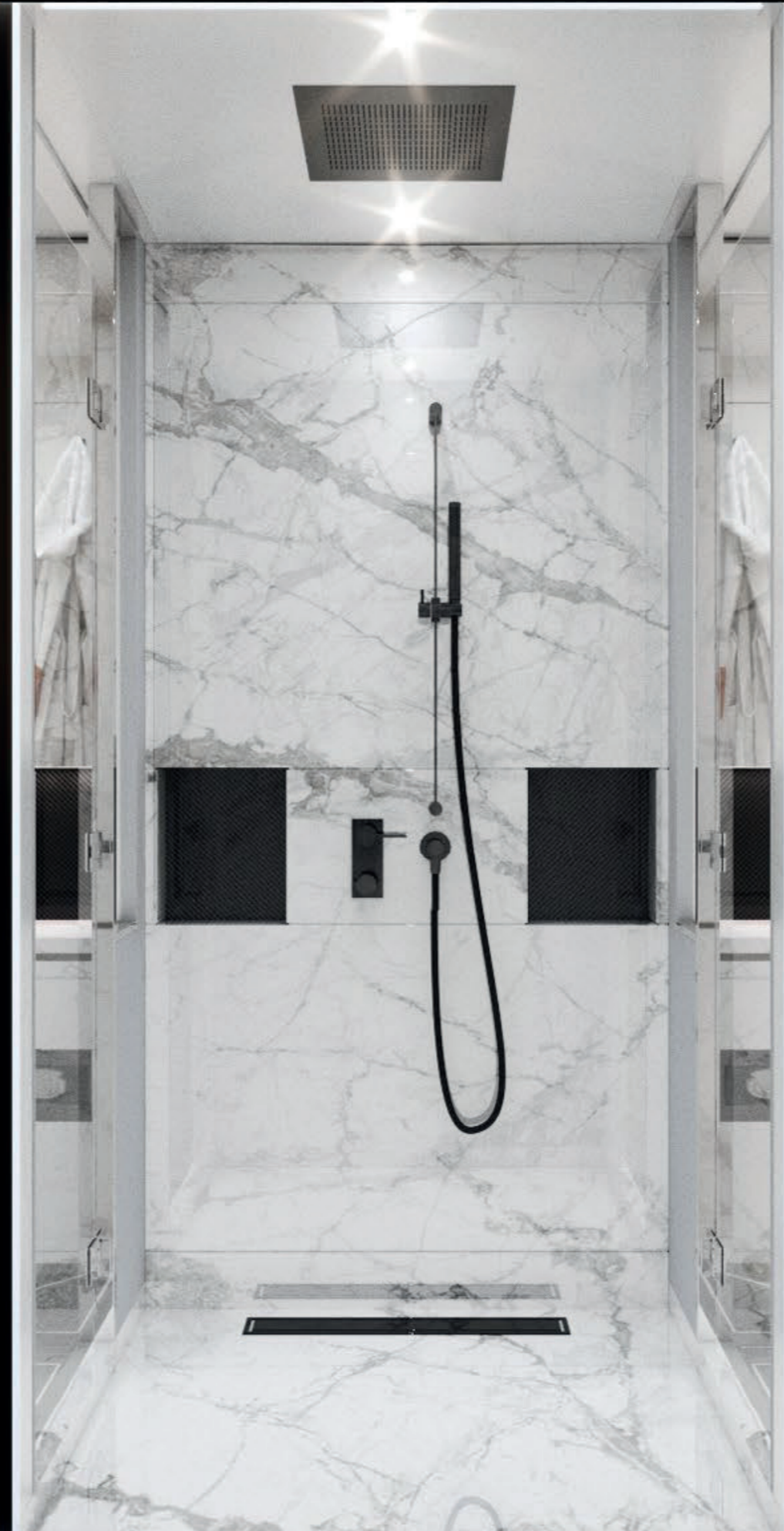




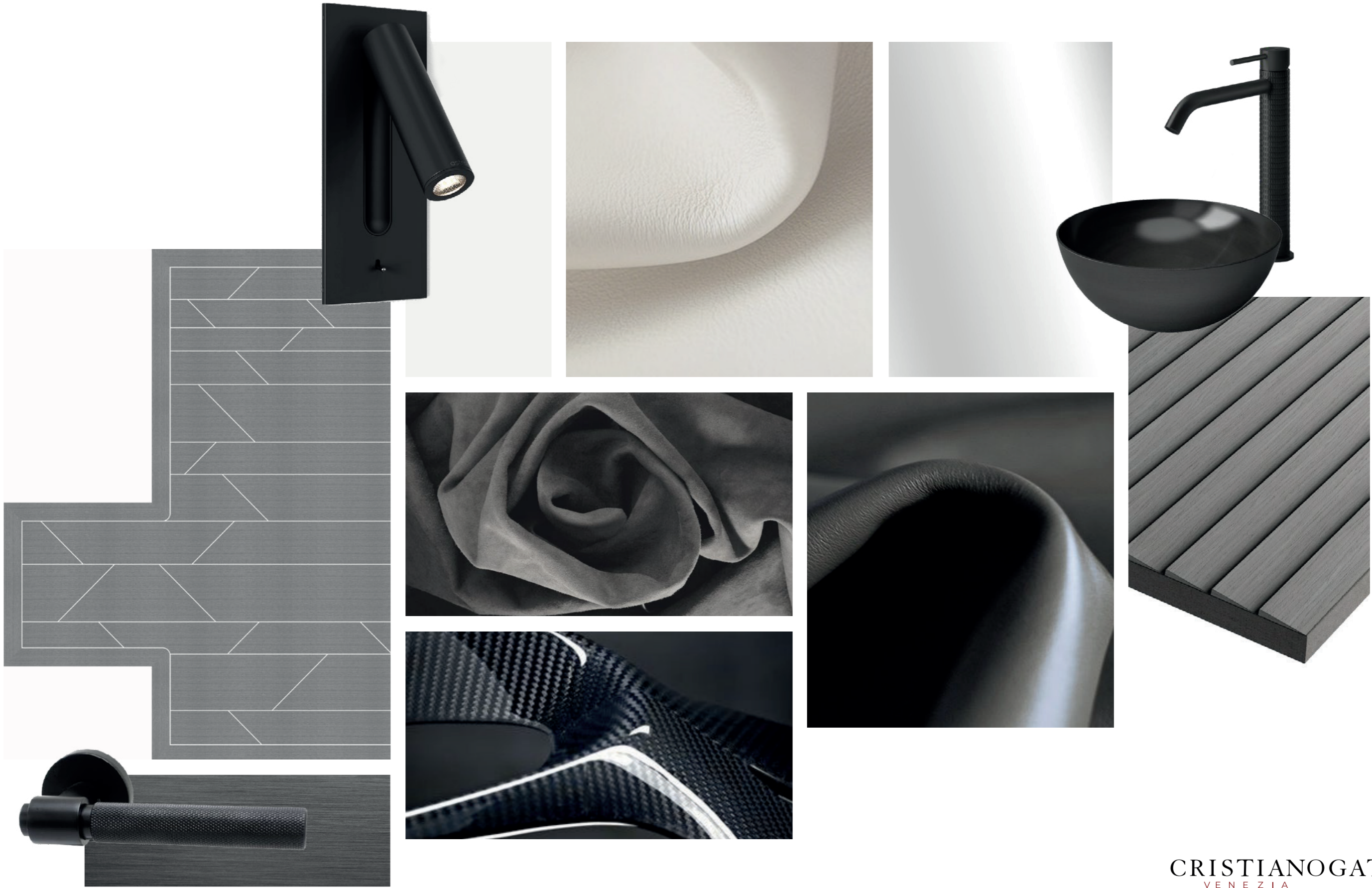












SPECIFICATIONS

DESIGN	HARTFORM YACHT DESIGN
INTERIOR DESIGN	CRISTIANO GATTO DESIGN

LENGTH	78,57 ft/ 23,95 m
BEAM	19.19 ft / 5.85 m
DRAUGHT	5.21 ft / 1.59 m

DISPLACEMENT	106.703,73 lbs / 48.4 t
--------------	-------------------------

CONSTRUCTION	ALUMINIUM
HULL SHAPE	V-PLANNING

ENGINES	2 x MAN V12X 2200 HP
PROPULSION	SHAFT

MAXIMUM SPEED	46 KNOTS
CRUISING SPEED	34 KNOTS

FUEL CAPACITY	1,215 G / 4,600 L
FRESH WATER	317 G / 1,200 L

PASSENGERS	18
BERTHS	6 + 2 Crew

CATEGORY	CE-A
----------	------

SPECIFICATIONS

HULL & DECK

- Hull of VD80: construction welded Aluminum using Alloy Plate 5083*
- Aluminum deck and superstructures
- Large Swim platform with rub rail
- Automated dual-function (transformer) boarding and swim ladder integrated in swim platform.
- Luxury interior materials for Master and Guest cabins bedding, and lounge furniture
- Carbon & Kevlar windshield/ side windows frames with integrated Navigation lights
- Carbon rooftop with sliding shutter panels on each side
- Carbon-look on windshield, dashboard, speaker boxes, helm insert, deck tables & flagpoles
- Engineered sport propellers
- Prop speed propeller treatment
- S-Line Package: Low noise & vibration levels
- Bower-Wilkins Marine speakers [8]
- Multi-Zone Wi-Fi Enabled Controls
- S-Series Isotto™ 'Admeto' Italian design steering wheel
- Self-draining flush deck
- Custom GTS-Series upholstery collection
- Esthec™ composite decking [3rd. generation] individual color choice
- Fold down mooring cleats [8]
- Smart lock system for fenders [8]
- Fender and line storage box on either side inner hull wall
- Large sun pad with electric adjustable hydraulic sun pad backrests
- Helm-operated hydraulic engine room hatch
- Forward-facing wraparound seating and large L-shaped seating with storage underneath, port and starboard side, or customized interior design by Cristiano Gatto on calculated pricing
- Refrigerated deck tables
- LED ambient floor lighting surround
- Cockpit bar with sink and bottle storage
- Refrigerator and water tap with sink, in cockpit bar
- Deck seating made of Silvertex. Automated [2x] double 'High-Low Pilot' seats, with storage underneath, made of carbon shell with quick dry foam™ and special fabrics with armrests
- Dashboard with integrated beverage holders, controls, engine start/stop buttons, throttle, and displays
- Fusion sound head unit
- Sliding glass cabin panel cockpit/ interior door
- Carbon designed flagpole sockets [2]
- All liquid filling access points on portside
- Black water discharge cap on portside
- Flush anchor hatch with electric and / or manual anchor system, operated from the helm position
- Double, hand shower located at aft
- Aft-release tender and toys garage with exit ramp
- Magnetic Wi-Fi charging stations at helm and sun pad
- Open, forward seating and dining-area, chill-out relax area with sun awning, fridge-table, ambiance lighting, and cushion storage
- LED multi-color underwater lights [2 under transom, 4 portside and 4 starboard-side]

ELECTRONICS & INSTRUMENTS

- 2x Garmin 24" displays
- Garmin autopilot and Garmin VHF-GMDSS communications
- Joy-stick engine controls
- Electronics throttle controls
- Flir night vision cam
- Satellite broadband antenna
- Satellite tv antenna system
- Radome radar
- Humphree trim-stabiliser system
- Engine control display
- Bow thruster
- Stern thruster
- Power steering system
- Engine oil temperature alarm
- Engine cooling temperature alarm

- LED Navigation lights integrated in windshield frame on port and starboard side and top light on aft side of deckhouse roof.
- Built in two-tone ships horn
- Garmin handheld VHF radio

ELECTRICAL SYSTEM

- Electronic switchboard
- Battery switches
- Battery charger
- Battery paralleling for start-up
- Service battery 24V/300A
- 220V/110Vplugs
- Shore power cable
- Shore power connection
- Glendenning cable master
- Cathode protection by zinc anodes and ground plate
- Generator *[tbd] 25 KW [certifications : EPA Tier 3, EUIII, EPA]

ENGINE ROOM

- Air extraction fans (2)
- Automated fire extinguishing system
- Automated engine room hatch operated from the helm
- Thermo-acoustic insulation

WATER & BILGE SYSTEM

- Electric freshwater pump
- Automatic bilge pumps
- Manual emergency bilge pump •
- Arid™ bilge pump system
- Fresh water wash-down points [2]

SAFETY EQUIPMENT

- Automated fire extinguishing system
- Portable fire extinguisher
- Fire alarm system
- Life vests (16)
- Life sling
- Flares
- First aid kit

GALLEY & LOUNGE AREA

- Cosentino™ / Dekton™ kitchen worktop with integrated Stainless-steel sink
- VD80 Galley/kitchen is completely equipped with Miele appliances:
- Galley with full size dual refrigerator Miele
- Miele Induction Cooking zones and seamlessly connecting worktop extraction
- Oven Microwave combi with steam function Miele DGM 7440
- Miele Build in Coffee machine
- Wine cooler Miele (KWT 7112 iG) 15 bottles / 3 layers
- Dishwasher Miele
- Water maker + carbon filter
- Quooker™ water heater tap + Cube for sparkling and chilled water
- Seagull Drinking water Purifier
- Stairs to top deck 'clear glass' and down to Primary area
- Storage cabinet
- L-shaped seating with storage
- Dimmable ceiling lights
- Esthec finished interior floor
- Skylight with mosquito screen and blinds
- Air conditioning system
- Day head
- iPad entertainment control system
- Stairs to top deck with glass protection walls
- Lounge seating
- Storage cabinet 's

PRIMARY CABIN

- Full beam primary cabin
- Queen size berth
- Dimmable ceiling lights
- Carpet flooring
- Mag charging plugs on either side of bed
- Vanity with mirror and seating
- Closets
- Storage cupboards
- Fixed audio remote
- Flatscreen television
- Fully equipped ensuite double head with 'his and her' sinks, 1 privacy* [option] glass enclosed rain shower
- Air conditioning

VIP CABIN

- Queen size berth
- Dimmable ceiling lights
- Carpet flooring
- Closets
- Storage cupboards
- Fixed audio remote
- Flatscreen television
- Fully equipped head ensuite with separate rain shower
- Air conditioning
- iPad entertainment control system
- Fixed audio remote
- USB and MAG charging on either side of bed

GUEST CABIN

- Twin berths
- Dimmable ceiling lights
- Bathroom with rain shower
- Closets
- Storage cupboards
- Airconditioning

CREW CABIN

- Stacked single berths (bunk style)
- Dimmable ceiling lights
- Carpet flooring
- Clothing closet
- Storage cupboards
- Fully equipped head with separate shower stall
- Air conditioning
- Separate entry for crew cabin

ACCESSORIES

- 2-pole awning extension for aft sunshade
- Cleat covers [Black]
- Personalized fender socks
- Long fender kit
- Monogrammed towel set [16]

VANGUARD DUTCH MARINE

THE DRIVING FORCE BEHIND VANDUTCH YACHTS AND DESIGN

Vanguard Dutch Marine stands as a prominent and influential figure in the world of luxury yacht manufacturing and design, serving as the powerhouse behind VanDutch Yachts and Design. With an unwavering dedication to innovation, masterful craftsmanship, and an unyielding pursuit of excellence, Vanguard Dutch Marine has solidified its position as a key player in the competitive marine industry.

The core of Vanguard Dutch Marine's success lies in its creation of VanDutch Yachts, a renowned brand celebrated for crafting sleek, contemporary, and high-performance luxury yachts that seamlessly fuse style and functionality. These yachts have earned widespread acclaim for their unique designs and state-of-the-art technology, appealing to a discerning clientele in pursuit of the ultimate yachting experiences.

Vanguard Dutch Marine's commitment to design excellence extends far beyond the realm of yachts. Their passion extends to the development of pioneering solutions that elevate the overall yachting experience. From opulent interiors to cutting-edge navigation systems, their meticulous attention to detail shines through in every aspect of their yachts.

In essence, Vanguard Dutch Marine assumes a pivotal role in the triumph of VanDutch Yachts and Design, driving the boundaries of yacht design and manufacturing to become a true leader in the luxury marine industry. Their unrelenting focus on innovation and quality continually shapes the future of yachting, ensuring that VanDutch Yachts maintain their leading position in the world of luxury yachting. Moreover, their foray into the Superyacht Division, ranging from 40ft to 400ft yachts, underscores their adaptability to the evolving market demands and their dedication to delivering ground breaking designs and experiences for yacht owners.



VANGUARD DUTCH  MARINE